

CONTACT ARRANGEMENT

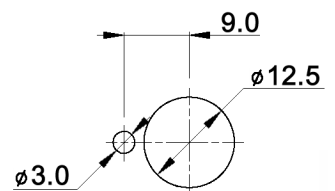
code for x	function	toggle towards keyway	toggle opposite to keyway
D	On-On	1-2, 4-5, 7-8	2-3, 5-6, 8-9
F	Mom-On		

code for x	function	toggle towards keyway	toggle in center	toggle opposite to keyway
E	On-Off-On			
G	Mom-Off-Mom	1-2, 4-5, 7-8	open	2-3, 5-6, 8-9
H	Mom-Off-On			
EA	On-On-On	1-2, 4-5, 7-8	2-3, 4-5, 8-9	2-3, 5-6, 8-9

Specifications:

Contact rating: 3A, 250V AC / 6A, 125V AC
 4A, 30V DC / 5A, 12V DC
 6A, 6V DC
Contact resistance: 20mOhm max.
Insulation resistance: 1 000MOhm min. at 500V DC
Dielectric strength: 1 500V, 50Hz for the duration of 1 minute
Operating temperature: -45°C to +140°C
Mechanical life: min. 200 000 cycles
Soldering conditions: hand-soldering: max.: 420°C, 3sec., 60W
 auto-soldering: max.: 270°C, 5sec.
Mounting instruction: max. torque: 137Ncm
Material: Terminal / contact: brass, silver plated
 Case: DAP
 Housing: stainless steel, CNS9265
 Bushing: copper alloy, C3604BD nickel plated
 Actuator: copper alloy, C3604BD chrome plated
Included accessories: 2 pcs. nut 15/32-32, nickel plated, 14mm wrench size
 1 pc. tooth washer
 1 pc. locking washer

PANEL MOUNTING



Tolerances: 0.00: ±0.25mm 0.0: ±0.40mm	Date	Name	<h1>MTG 306 x</h1>
	04/09	dr	
Modifications	Date	Name	

knitter-switch

30 18 03

Page

1/1